



Deeping St Nicholas Primary School
 Main Road
 Deeping St Nicholas
 SPALDING
 Lincolnshire
 PE11 3DG

01775 630280

enquiries@deeping-st-nicholas.lincs.sch.uk

Newsletter 11 July 2016

Attendance

Target Met								
GROUP	EYFS	YEAR 1	YEAR 2	YEAR 3	YEAR 4	YEAR 5	YEAR 6	SCHOOL
TERM 1	86.81%	90.28%	94.25%	93.52%	95.51%	95.51%	99.54%	94.49%
TERM 2	96.83%	99.24%	96.75%	95.21%	98.86%	98.72%	95.20%	97.28%
TERM 3	95.98%	93.10%	97.04%	96.98%	99.34%	95.76%	98.28%	97.14%
TERM 4	95.04%	94.68%	96.22%	95.48%	95.99%	99.18%	97.52%	96.62%
TERM 5	93.94%	96.97%	93.56%	98.34%	97.54%	99.18%	96.21%	96.94%
2015 - 2016 Terms 1 - 5	93.97%	93.59%	95.46%	96.37%	97.41%	97.58%	97.38%	96.53%
Week 1	95.92%	100.0%	94.64%	98.17%	95.35%	97.41%	100.0%	96.96%
Week 2	98.41%	100.0%	94.44%	96.36%	100.0%	100.0%	98.15%	98.23%
Week 3	94.29%	100.0%	100.0%	92.73%	96.92%	96.92%	100.0%	96.61%
Week 4	88.57%	100.0%	91.43%	100.0%	98.46%	100.0%	96.67%	96.95%
Week 5	100.0%	100.0%	71.43%	100.0%	96.92%	100.0%	83.33%	94.24%

THE ATTENDANCE TARGET IS 97.5%

It is easy to see the effects of holidays taken in term time and illness in the figures this week.

END OF YEAR REPORTS

These were distributed to all children who were in school on Friday afternoon. Please make sure that you have returned the slip to school acknowledging receipt of the report even if you do not want to make a comment. We have a duty to report to parents once a year and these needs to be evidenced.

PUPIL PROGRESS BOOKLETS

It is planned that these will be sent home on Friday 15 July 2016. It will not be possible to put the end of year attendance figures on these as the year has not ended. We will write in the figure for Term 6 so far so that you have an indication of what the attendance could be. The new, improved Pupil Progress Booklets for September will show the 2015 - 2016 Attendance.

SPORTS DAY WEDNESDAY 13 JULY 2016 FROM 10.00 AM TO 11.30 AM

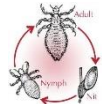
The important question is, what will the weather be like? We have to consider not just whether it is raining but also the condition of the grass before we can make a decision about whether Sports Day can go ahead. It is always helpful if there is a complete downpour as this makes the decision very easy to make but this is rare. If there is doubt, we will aim to make a decision by the start of school at 8.45am so that parents have time to make alternative arrangements.

SATS RESULTS

We were hoping that the DfE would provide guidance that would help schools to develop systems which could determine whether children in all year groups had met the expected standard as a result of the SATs tests, but we have been disappointed to see that the outcomes only state whether the standard has been reached, or not.

What was pleasing was that the teacher assessments matched the SATs results in both year groups, which shows how well our teachers know our children and how accurate their assessments are. We are still waiting clarification of the DfE Progress measures so that can say whether the outcomes represent good progress from their starting points.

Children and teachers have had a challenging year working towards an unknown goal; they all deserve our thanks for seeing things through and giving of their best.



Head Lice Reminder Please check your child's hair for these visitors and apply a treatment if live lice or eggs are found. A cheap conditioner will make the hair easy to comb through. Some people recommend tea tree shampoo - or regular combing with a nit comb. Mrs Ecob still has a few combs available if you would like one.